

Danny Carey Transcriptions (More to Come Weekly)

Transcribed by Dan Britt

Stinkfist Verse

Drum Set

Musical notation for the Stinkfist Verse, featuring a drum set in common time (C). The notation is written on a five-line staff with a treble clef and a common time signature. It includes various rhythmic patterns such as eighth notes, quarter notes, and eighth rests, with some notes marked with an 'x' to indicate specific drum sounds. There are also some notes with a circled 'o' above them.

Eulogy Verse

Musical notation for the Eulogy Verse, featuring a drum set in common time (C). The notation is written on a five-line staff with a treble clef and a common time signature. It includes various rhythmic patterns such as eighth notes, quarter notes, and eighth rests, with some notes marked with an 'x' to indicate specific drum sounds. There are also some notes with a circled 'o' above them. The piece ends with a double bar line and a common time signature.

Eulogy Beat at 2:39

Musical notation for the Eulogy Beat at 2:39, featuring a drum set in 6/4 time. The notation is written on a five-line staff with a treble clef and a 6/4 time signature. It includes various rhythmic patterns such as eighth notes, quarter notes, and eighth rests, with some notes marked with an 'x' to indicate specific drum sounds. There are also some notes with a circled 'o' above them. The piece ends with a double bar line and a common time signature.

Eulogy Syncopation at 4:46

Musical notation for the Eulogy Syncopation at 4:46, featuring a drum set in common time (C). The notation is written on a five-line staff with a treble clef and a common time signature. It includes various rhythmic patterns such as eighth notes, quarter notes, and eighth rests, with some notes marked with an 'x' to indicate specific drum sounds. There are also some notes with a circled 'o' above them.

Empty musical staff with a treble clef and a common time signature.

Empty musical staff with a treble clef and a common time signature.

Empty musical staff with a treble clef and a common time signature.

8



9



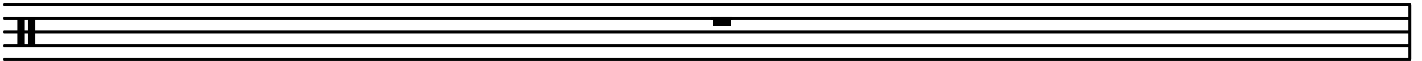
10



11



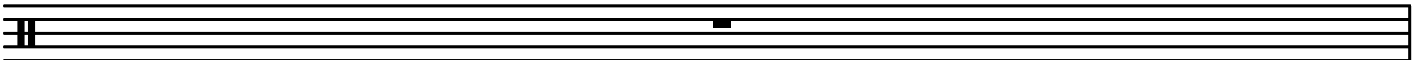
12



13



14



15



16



17



18



19



20



21



22



23



24

